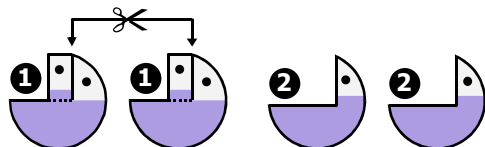
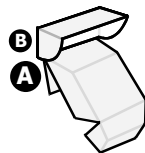
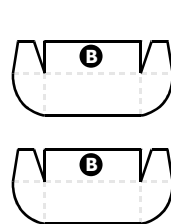
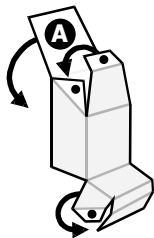
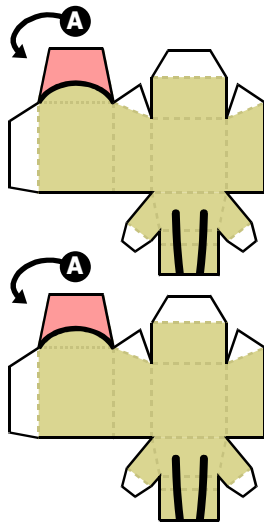
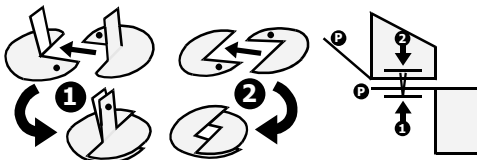


Let's Build Ruby! ♥

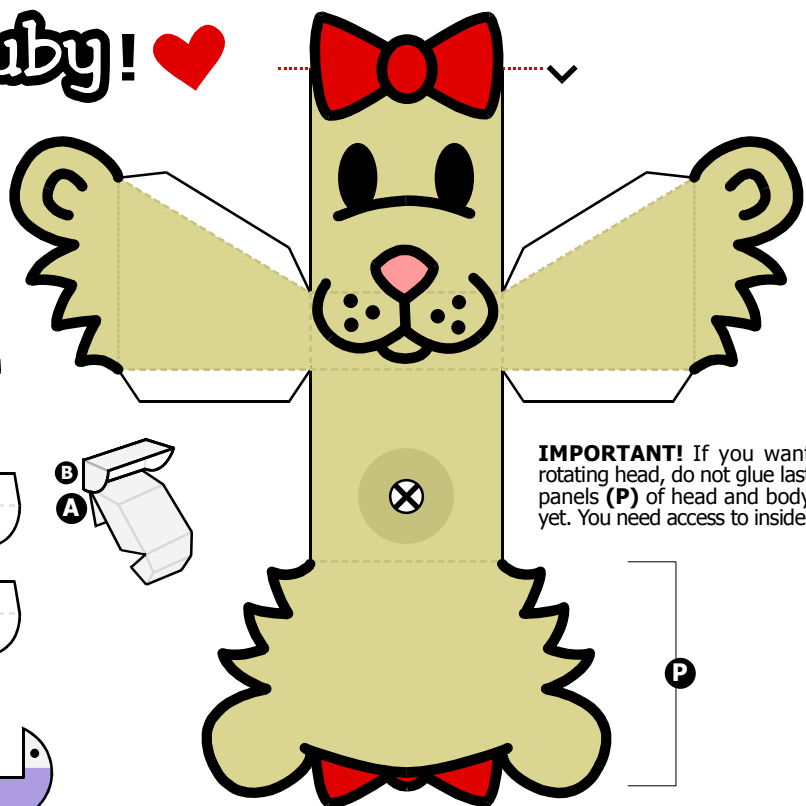
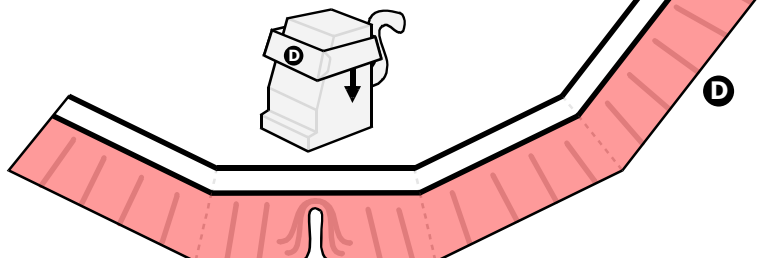
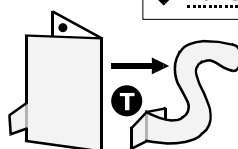
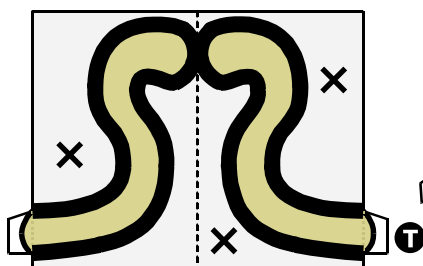
Designed for **OBJECTIVE: Ministries**
by Mr. Kutsushima of Happy Origami Ministry, Tokyo
www.geocities.jp/happyorigamiministry/



ROTATING HEAD DETAILS:



After complete body and head (leave last panels unglued,) insert plongs of crasp (1) through hole in top body panel so plongs pointing up. Put head over plongs through hole in bottom of head. Put washer (2) over plongs in head. Apply glue to outside of plongs and press plongs flat against washer until they hold. Glue final panels into place.



IMPORTANT! If you want rotating head, do not glue last panels (P) of head and body yet. You need access to inside.

- Glue Surface
- ✕ Cut Out
- ^ Mountain Fold
- ✓ Valley Fold

